

A

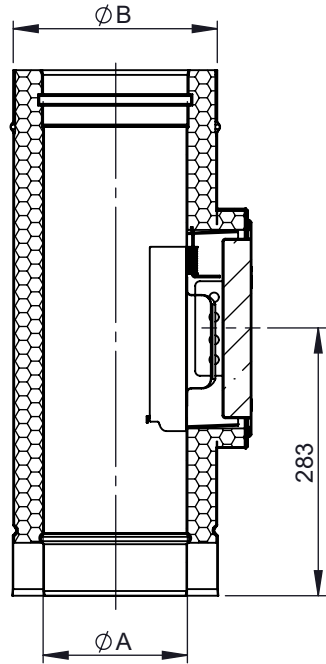
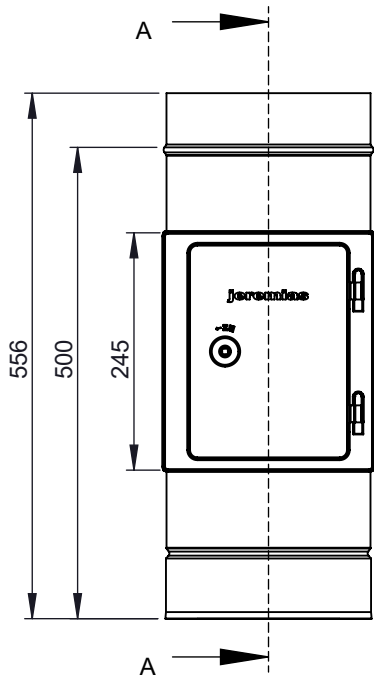
B

C

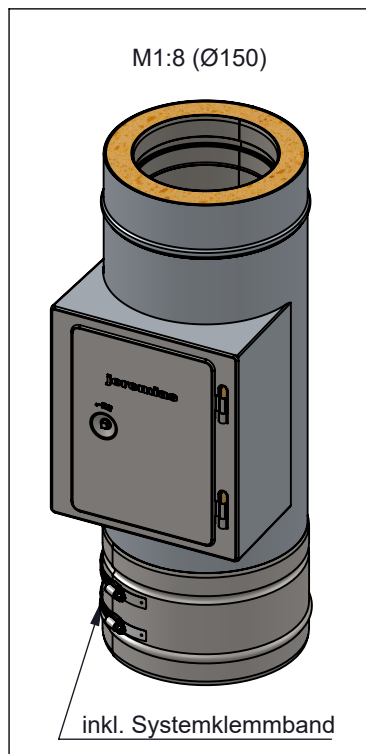
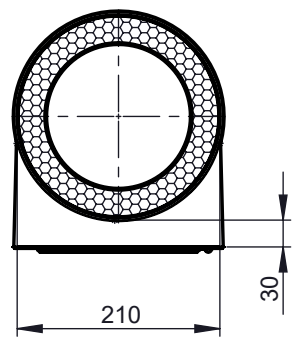
D

E

F



A-A (1 : 8)



- P < 0 Pa
- 600°C
- F
- Ö, G
- 32 mm

Ø	80	100	115	120	130	140	150	160	180	200	225	250	300	350	400	450	500	550	600	650	700	750	800	900	1000
A	80	100	115	120	130	140	150	160	180	200	225	250	300	350	400	450	500	550	600	650	700	750	800	900	1000
B	145	165	180	185	195	205	215	225	245	265	290	315	365	415	465	515	565	615	665	715	765	815	865	965	1065
t _i /t _a	0,6/0,6													0,8/0,8											
kg	5,93	6,45	6,85	6,97	7,23	7,43	7,69	7,81	8,26	8,72	9,3	9,89	11,11	13,37	15,56	16,58	17,87	19,84	21,59	23,01	25,42	29,02	31,47	33,25	37,84

Material 1.4404 / 1.4301 Hochglanz				mm / kg			Scale 1:8				
				Revisionsnummer A5			Format A4				
				Datum 10.02.2010		Name FST		Sheet 1			
				drawn		checked		Artikelbezeichnung Reinigungsöffnung mit ES Türe T600 N1			
				A5		19.01.2017		Artikelnummer DWP-Ø-032			
				A4		13.12.2016					
				A3		23.06.2016					
				A2		08.04.2016					
				revision		date		name			
				All rights reserved!							

